



**PINEWOOD**

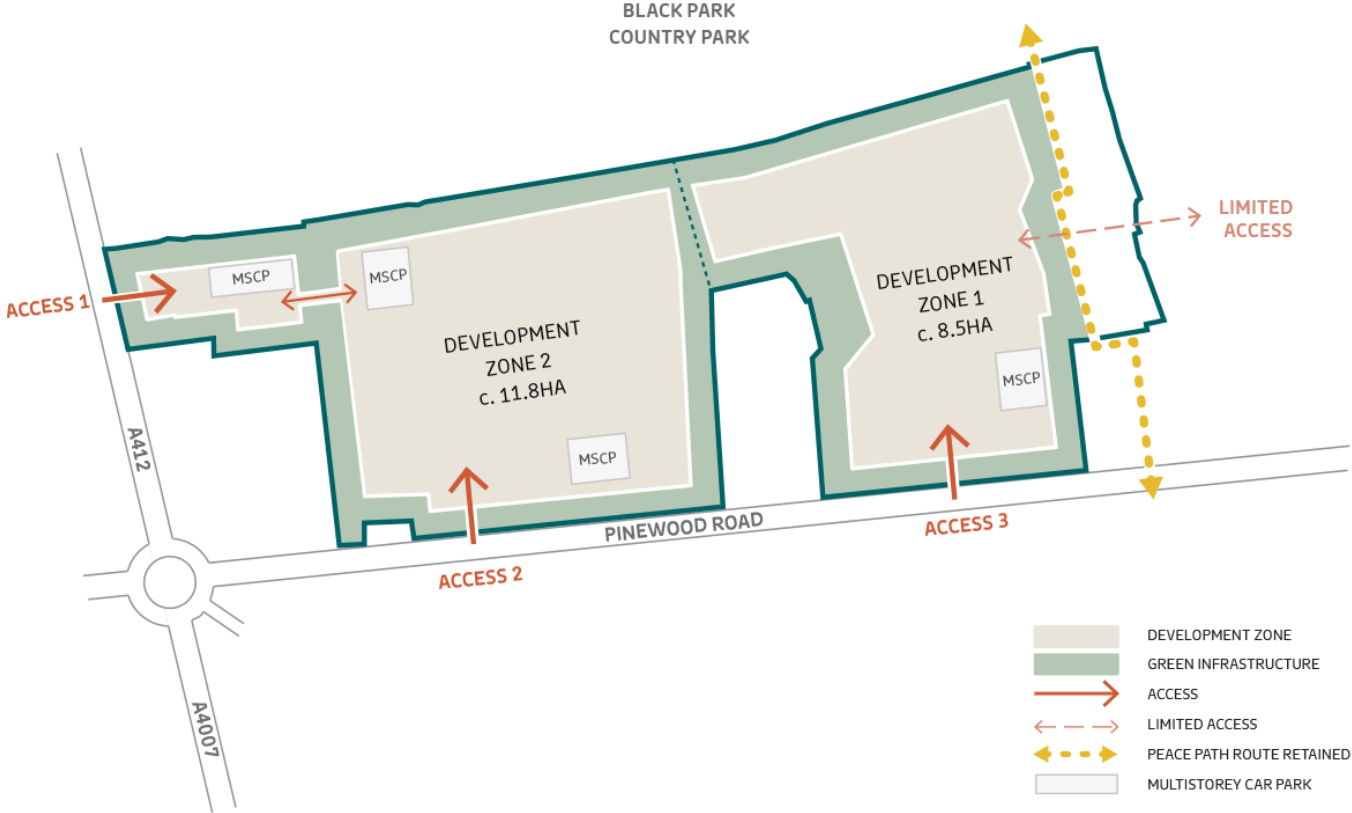
**CLG – MAY 2022**

# CONTENTS

---

- 1. Pinewood Community Liaison Update**
- 2. SHUK / Pinewood South**
- 3. Project Infinity**
- 4. Workshop 160 Planning Application**
- 5. PSDF Permissive Path**
- 6. Five Points Roundabout**
- 7. A412 and Black Park Road Junction**
- 8. Signage**

# SHUK / Pinewood South



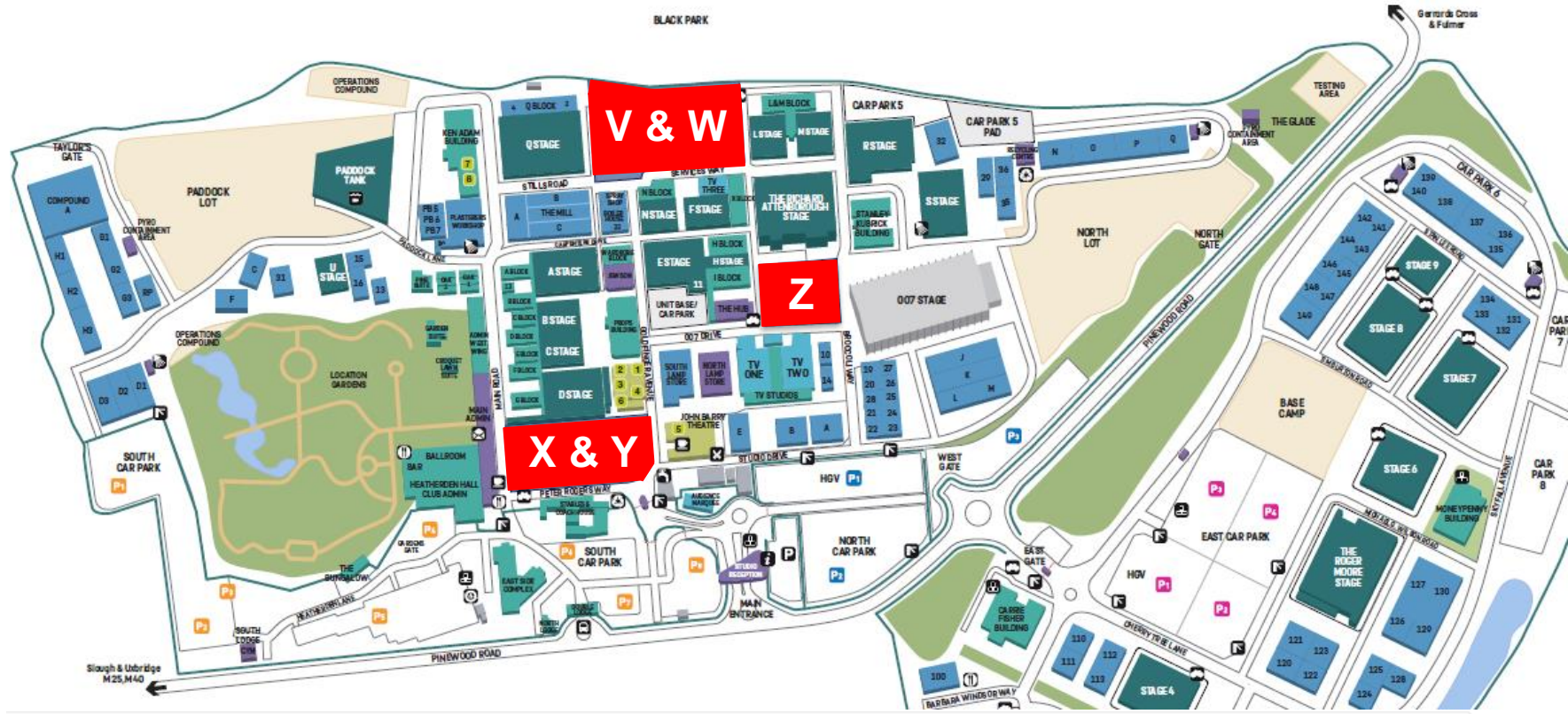




**PINWOOD**

**PROJECT INFINITY UPDATE**

# Project Infinity – Stage Locations



# Project Infinity – V & W – May 2022



# Project Infinity – X & Y Stage – May 2022

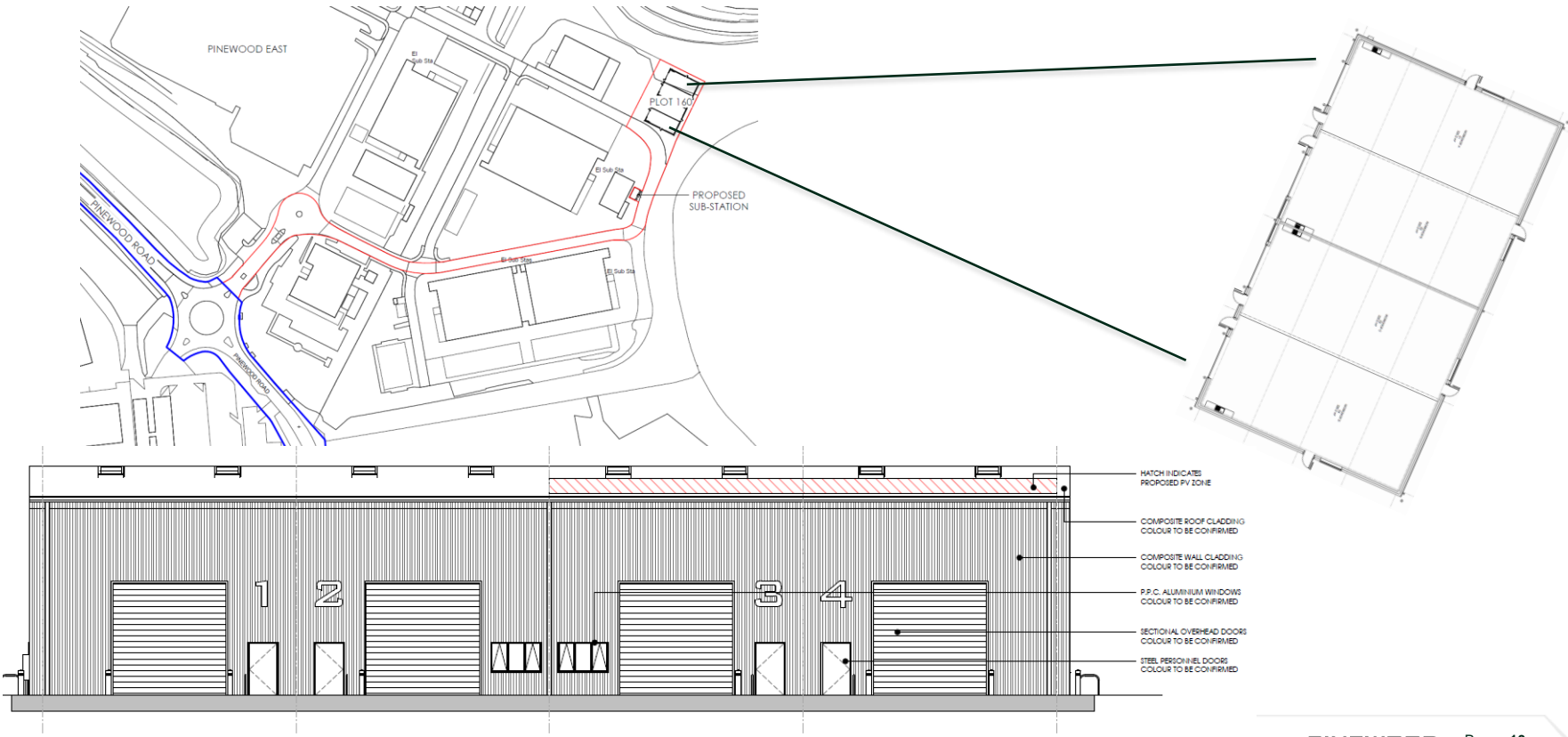




# Project Infinity – Z Stage – May 2022

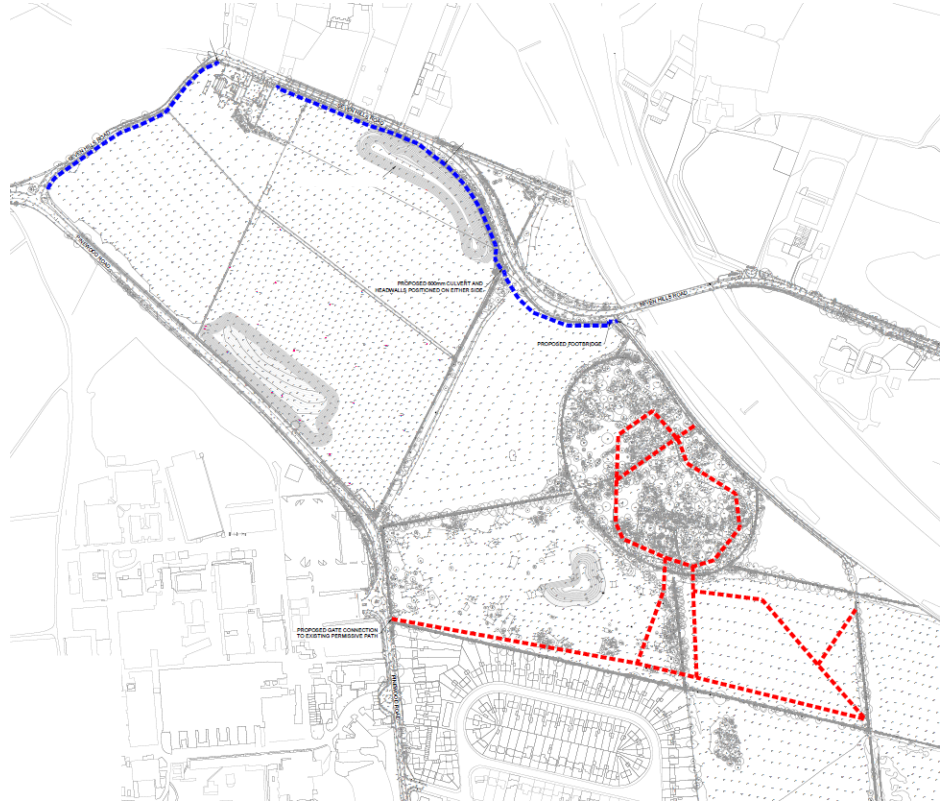


# Workshop 160 Planning Application



WEST ELEVATION

# PSDF Permissive Path



EXISTING PERMISSIVE PATH ■ ■ ■ ■  
PROPOSED PERMISSIVE PATH ■ ■ ■ ■

# Five Points Roundabout



## Five Points Roundabout

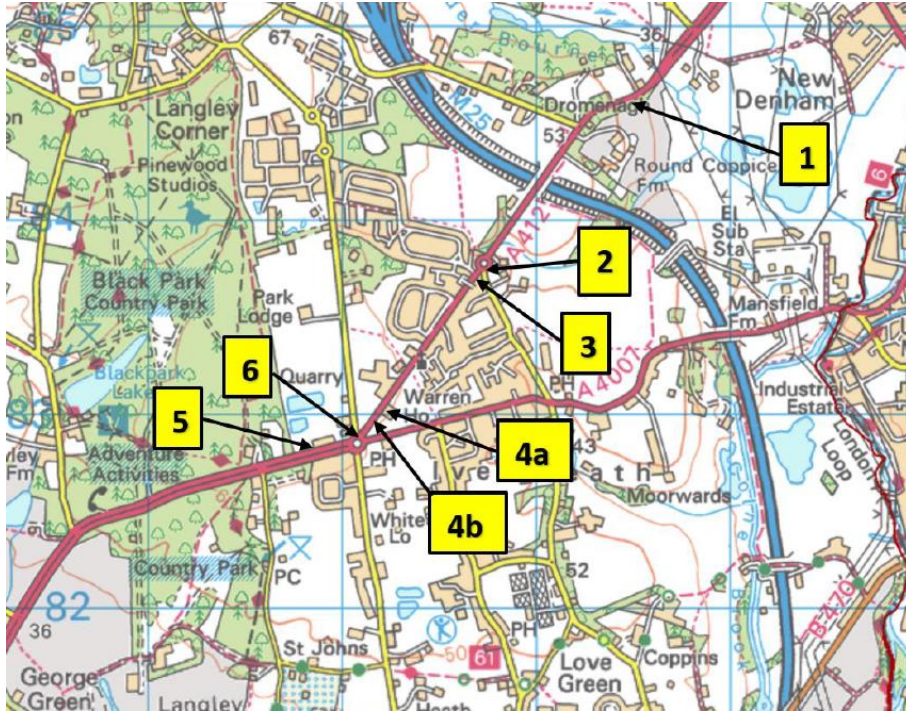
- The FPR signal scheme agreed previously will result in the loss of circa 55 Category A and B trees.
- Pinewood has put forward an amended signal scheme with a reduced footprint, principally on the approaches to the junction.
- The amended scheme will preserve 75% of these trees.
- The revised scheme will work acceptably, albeit not quite as well as the scheme agreed previously.
- BC has reviewed and provided relatively detailed technical comments.
- These comments are being dealt with and do not change the scheme materially.
- An amended scheme will be issued to BC shortly.
- BC's guidance on which scheme to take forward will be sought.

### A412:

- A safety improvement at the A412 / Black Park Road junction was implemented in Summer 2020.
- There was an on-site meeting between local councilors, BC Highways and Pinewood in mid-April.
- BC Highways advised that there is a five-year monitoring / review period before further measures will be considered.

# Signage

Positive signing from the M40:



Replacement Pinewood Green advance width restriction signs:



New advisory signing on the Pinewood Green and Thornbridge Road entry points

